

FEATURES

The ROTOMAX is designed to improve the cleaning efficiency of your high pressure washer by producing a rotating action that greatly expands the contact area of the cleaning stream, while providing the impact of a zero-degree nozzle. The unique internal design allows aim-and-shoot operation, even when cleaning overhead, and permits easy replacement of all wear parts. Sized according to flow rate, a Rotomax is perfect for your toughest cleaning tasks.



SPECIFICATIONS

Max Pressure	3,625 PSI
Max Temperature	176° F
Inlet Size	1/4"-19 BSPP-F
Dimensions	Ø 1.5 O.D. x 4.1 Lg.
Weight	.6 lb.
Materials	Brass, Plastic, Ceramic, Buna-N

PART NUMBER	500 PSI	1000 PSI	1500 PSI	2000 PSI	2500 PSI	3000 PSI	3500 PSI
ZROTOMAX1	1.52 GPM	2.15 GPM	2.64 GPM	3.05 GPM	3.40 GPM	3.73 GPM	4.02 GPM
ZROTOMAX2	1.72 GPM	2.43 GPM	2.98 GPM	3.44 GPM	3.84 GPM	4.21 GPM	4.55 GPM
ZROTOMAX3	2.06 GPM	2.92 GPM	3.57 GPM	4.12 GPM	4.61 GPM	5.05 GPM	5.46 GPM

WARRANTY

General Pump accessories are warranted by the manufacturer to be free from defects in material and workmanship. Period of warranty shall be 90 days from date product is received by original buyer. Liability of manufacturer under the foregoing warranty is limited to **repair or replacement** at the option of manufacturer of that product which according to the manufacturer's investigation was deemed defective at time of shipment. Damage resulting from neglect, abuse, tampering or misapplication voids this warranty. This warranty is in lieu of all other warranties, expressed or implied, including any warranty of merchantability and/or any and all other obligations or liabilities on the part of the manufacturer.



General Pump
is a member of
the Interpump Group



Ref 300109 Rev. E
01-19



ROTOMAX

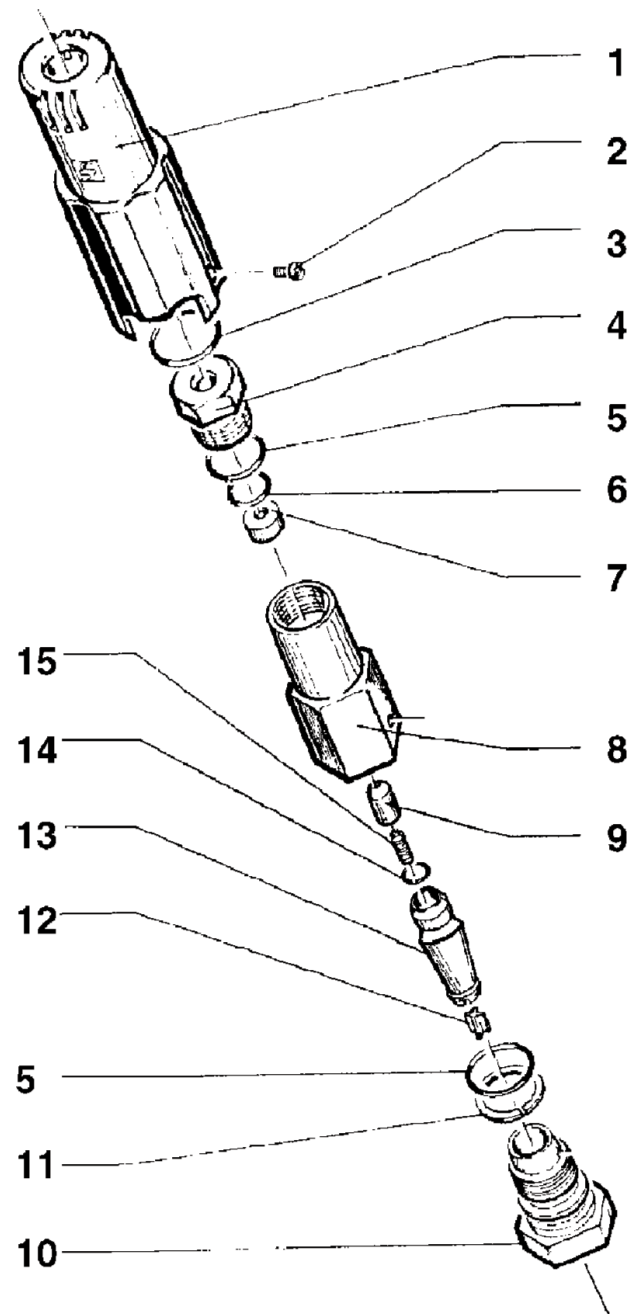
Adjustable Rotating Nozzle

GENERAL PUMP *A member of the Interpump Group*

PARTS LIST

ZROTOMAX1, MAX2, MAX3 Adjustable Rotating Nozzle

No.	Part No.	Description	Qty.
1	10044951	Cover, Plastic	1
2	99070200	Screw, Retaining, M3 x 4	1
3*	90384700	O-ring, .797 x .103	1
4	10045070	Plug, M18 x 4	1
5*	90383500	O-ring, .594 x .103	2
6*	90358500	O-ring, .426 x .070	1
7*	10045509	Seat	1
8	10045509	Body	1
9*	10045609	Tip, Rotor	1
10	(See Below)	Nipple, Inlet	1
	10056570	ZROTOMAX1 , Ø.055 in. (1.4 mm) Size Code: Three Notches	
	10045470	ZROTOMAX2 , Ø.063 in. (1.6 mm) Size Code: No Notches	
	10047170	ZROTOMAX3 , Ø 0.079 in. (2.0 mm) Size Code: One Notch	
11*	90509000	Ring, Back-up	1
12*	10045351	Rotor Guide	1
13	10056402	Roto Assembly	1
14*	90357400	O-ring, .239 x .07	1
15	(See Below)	Nozzle	1
	98667400	ZROTOMAX1 , Ø .055 in. (1.4 mm) Color Code: Red	
	98672500	ZROTOMAX2 , Ø .059 in. (1.5 mm) Color Code: Light Blue	
	98678000	ZROTOMAX3 , Ø .063 in. (1.6 mm) Color Code: Black	
*	190040	Repair Kit	



IMPORTANT

When installing the ROTOMAX, please note:

Do not tighten the ROTOMAX by the plastic cover; use a wrench on the hex portion of the inlet nipple (#10 on parts drawing). This will avoid stripping the holding screw on the plastic cover.